



PointForce Basic is a high-performance pointcloud and model viewing application that is perfect for realtime data visualization.

Easy to Use

Using PointForce is extremely easy, because of the clear interface, recognizable icons and generic manipulation tools. With easy to use navigation windows such as 3D, 2D and bubbleview, most people will feel directly at home.

Performance

PointForce's 3D engine has been built to deliver high performance when handling even the largest laserscan datasets and 3D textured models. Pointcloud datasets are streamed directly from disk. This means you can work with files many times larger than available memory.

Compatible with all scanning systems

Scan data from Zoller & Frolich, Leica, Riegler and others can be imported into PointForce Basic. Data is imported with the correct translation/rotation when available. Data from different scanning systems can be visualized simultaneously.

Photographic representation

Pointcloud data can be difficult to understand. Because of this, PointForce enables users to use a bubbleview representation of the scanner data or view the pointclouds in extreme resolution in 3D.

Import 3D textured models

PointForce enables users to view 3D textured models simultaneously with pointcloud data. This is especially useful

when geometry has to be compared or when historical 3D CAD data is available. New designs can be reviewed on top of accurate laserscanning data.

Import Drawings and view scan positions

PointForce enables users to import drawings and maps into the pointcloud data. When scan data from Z+F scanners (.zfs files) is used you can review your scan positions.



Laserscan with coloured pointcloud

Smart Walkthrough

View only the scans with the smart walkthrough feature. When walking through the pointcloud automatically the scans in the defined radius will turn on, while other scans will be turned off. This improves the view tremendously.

For more information, demonstration or a test version, contact us!

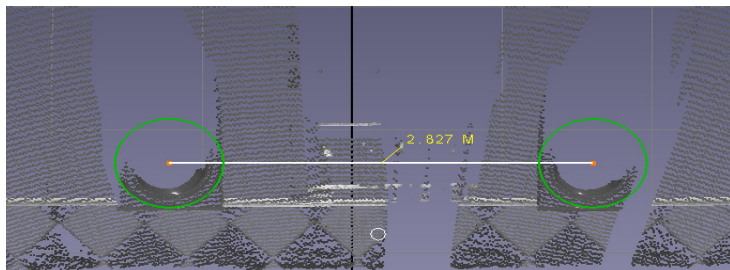


DelftForensics
Motorenweg 12
2623 CR Delft
The Netherlands

T: +31 (0)15 257 3427
F: +31 (0)15 262 5330
www.DelftForensics.com
info@DelftForensics.com

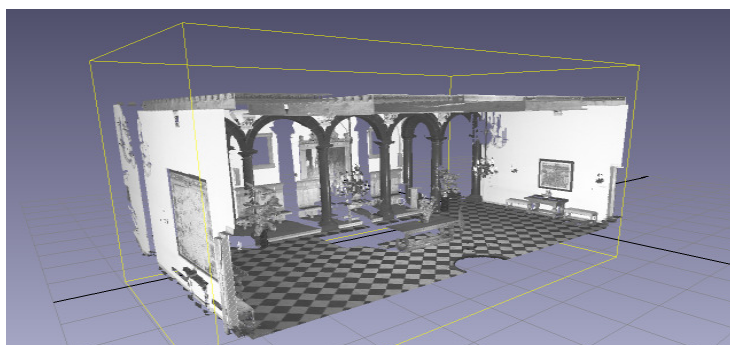
Viewing

Pointcloud data becomes easier to understand when more points are loaded. PointForce is fully optimized to load huge amounts of point cloud data. On average workstations near real-time streaming of 20 million points on screen are no problem.



Screenshots

Perspective or orthographic captures can be rendered up to 80 megapixels. This is ideal for further processing in CAD packages or to create huge posters. Especially phase-based scanners will have much use for this rendering option within the software.



Save views

Rapidly create views within your 3D scene. Use them for clarification, meetings or other presentation purposes. The easy movement between views is easy to understand for everybody.

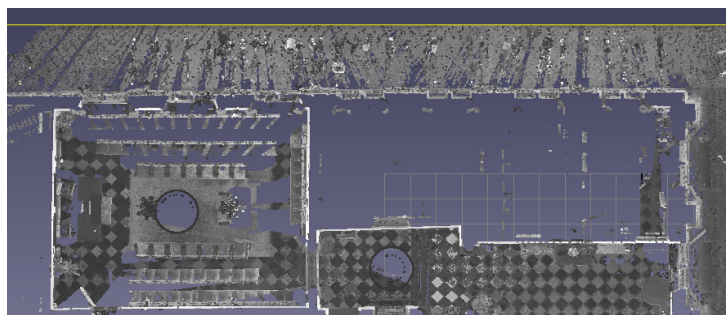
Additional modules and PointForce PRO edition

Colour Photo match

Especially made to add photo (planar or panoramic) colour information to laserscans. By picking corresponding points between a scan and the image the colour information can be added to the scan.

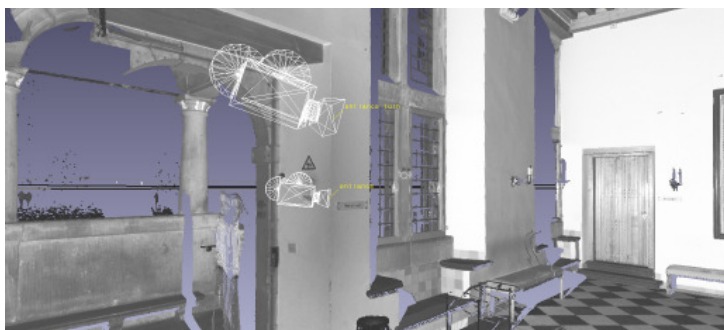
Camera Positioning viewer

This module is created for the safety/security sector. You can position a camera in 3D space and add a sweep angle and parameters.



Clip box

The clip box enables users to visualize only the part of the



Animation

Produce animations of your pointcloud data easily with the animation module. The camera path through the pointcloud can be setup and recorded.

New release: PointForce Pro edition

View huge pointcloud datasets and enjoy all new features and modules with PointForce Pro edition .

This new version includes all new additional modules to view colour information, make animations and position camera's.